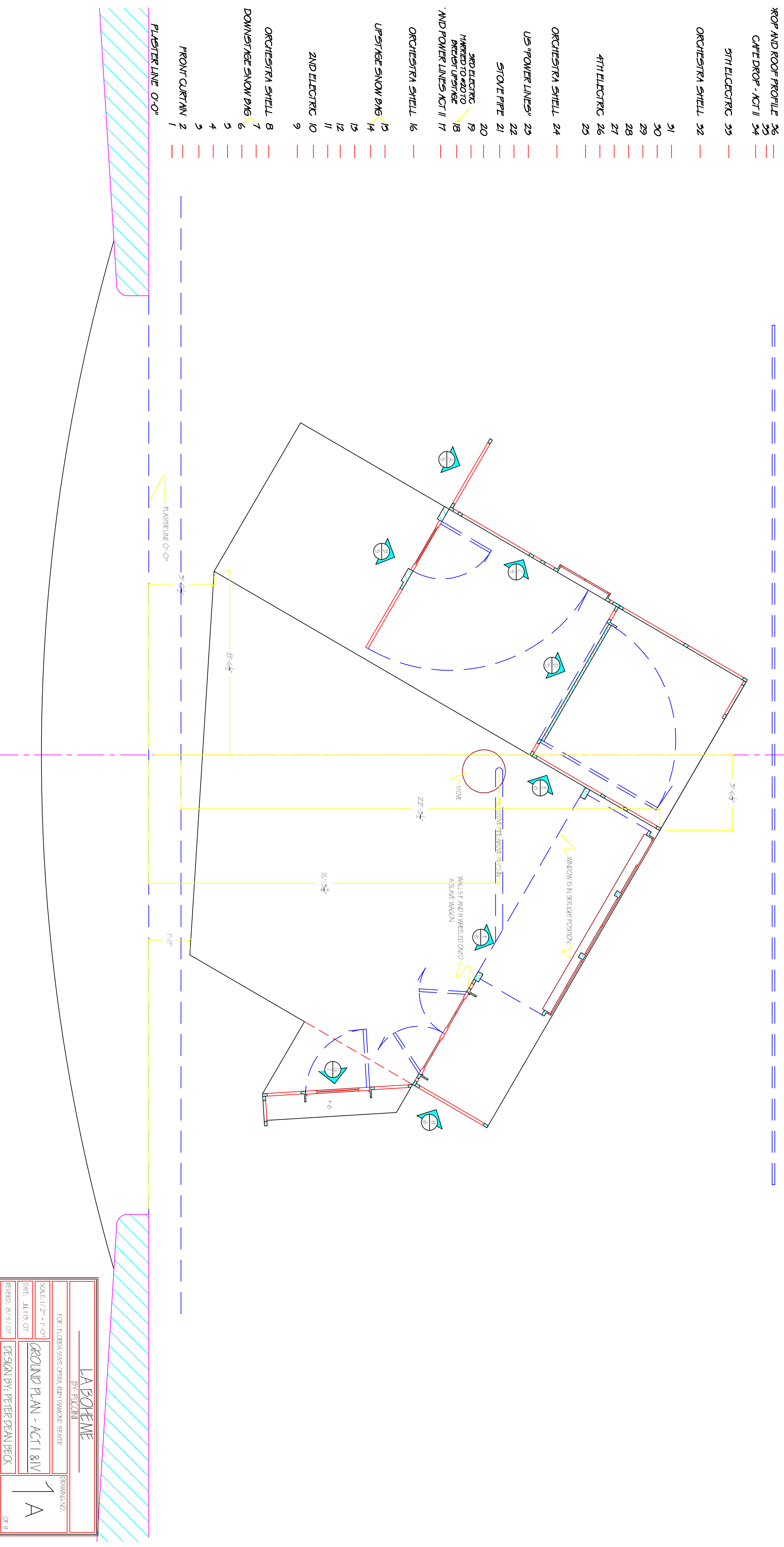


ROP AND ROOF PROFILE	36
CAFE DROP - ACT II	34
5TH ELECTRIC	35
ORCHESTRA SHELL	32
31	---
30	---
29	---
28	---
27	---
26	---
4TH ELECTRIC	25
ORCHESTRA SHELL	24
US "POWER LINES"	23
22	---
STOVE PIPE	21
20	---
3RD ELECTRIC	19
HARRIED TO #20 TO	18
BEFORE UPSTAGE	17
AND POWER LINES ACT II	17
ORCHESTRA SHELL	16
UPSTAGE SNOW BNS	15
14	---
15	---
12	---
11	---
2ND ELECTRIC	10
9	---
ORCHESTRA SHELL	8
7	---
DOWNSTAGE SNOW BNS	6
5	---
4	---
3	---
FRONT CURTAIN	2
1	---
PLASTERLINE 0'-0"	---



LA BOHEME	
BY: PULCINI	
FOR: FLORENCE STATE OPERA, RUBY DIAMOND THEATER	
SCALE: 1/2" = 1'-0"	DRAWING NO. 1 A
DATE: 11/19/07	DESIGN BY: PETER DEAN BECK
REVISION: 01/19/07	OF 9